



PG Technical Seminar (30-08-2021 TO 04-09-2021)



Batch 2020-2022

PG Co-Ordinator

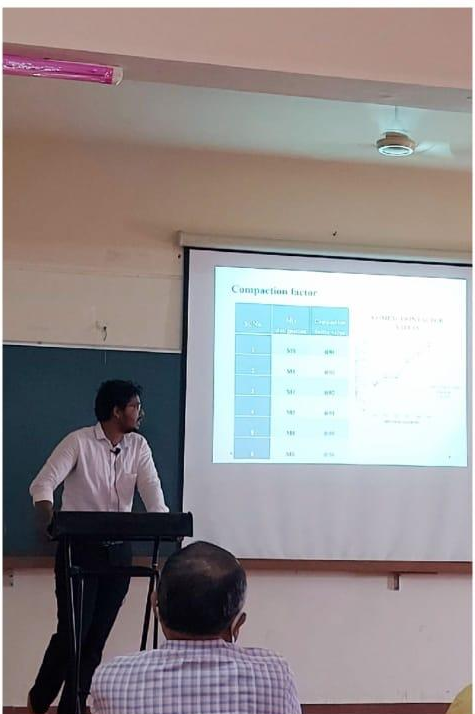
Dr. C S Vijayakumar

Seminar Co-Ordinators

Vinod Kundaragi

Ramya B V

**PG Program in structural Engineering
Department of Civil Engineering
Bapuji Institute of Engineering and Technology
Davangere**















Compaction factor

Sl. No.	Max. Compaction (mm)	Compaction (mm)
1	90	80
2	90	80
3	90	80
4	90	80
5	90	80
6	90	80

GRAPHICAL REPRESENTATION OF DATA











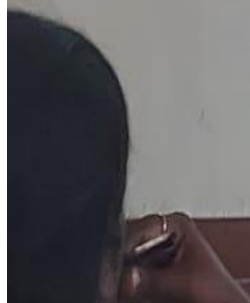






APPLICATION OF FIBRE OPTIC SENSORS IN BUILDINGS

-
-
-
-
-
-
-
-
-
-
-



CS II
M1
M2
M3
92116



4

- > Since the tensile strength of concrete is mainly satisfied by the steel bar, reinforcement only the "ribs" containing the reinforcement are kept when the remaining "unreinforced" concrete portion below the neutral axis is removed, to reduce the self-weight of the slab.
- > This is achieved by placing these ribs or other shapes on the formwork before casting of the concrete.
- > All the ribs are directed from column heads or beams. The depth of ribs maintained is as same as depth of column head or beam.





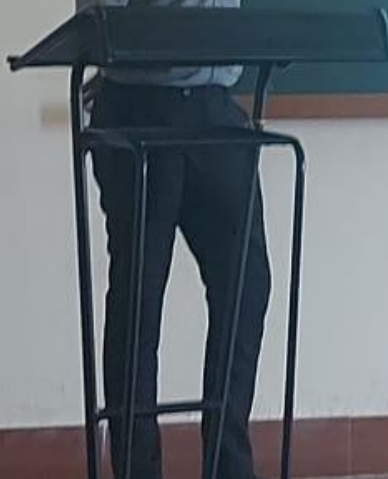
WELCOME
FORUM OF PRACTICING ARCHITECTS AND
CONSULTING CIVIL ENGINEERS (R), Davangere
INTERNSHIP TRAINING PROGRAMME
FOR
CIVIL ENGINEERING STUDENTS

Association of Consulting Civil Engineers
Davangere Centre

Supervised by
INSTRUCT
Davangere Centre

1023, P. P. S. ROAD, COMBINE INDUSTRIAL, P. P. S. ROAD, DAVANGERE, KARNATAKA









WELCOME
FORUM OF PRACTICING AND
CONSULTING CIVIL ENGINEERS
INTERNSHIP TRAINING
FOR
CIVIL ENGINEERING

Association of Consulting Civil Engineers
and its Designers Centre
56269, FPACI COMMUNITY CENTRE, 7, Cross, 55, Layall, B, Jayaramnagar, Laksh Nager

Supervised by

USEFUL
M1
M2
M3
WELCOME
REPORT

INTRODUCTION

Carbon footprint is the amount of carbon dioxide released into the atmosphere as a result of the activities of a particular organization or community.

There are two aspects to the carbon footprint of a body, environment component.

First, there is the CO₂ produced by a variety of processes in its ongoing operation, associated with the energy used by heating, lighting, air conditioning, maintenance, and its eventual disposal.

WELCOME
FORUM OF PRACTICING
CONSULTING CIVIL ENGINEERS
INTERNSHIP TRAINING
FOR
CIVIL ENGINEERING
Support
Association of Consulting Civil Engineers
Davangere Centre
562819, SPARK COMMUNITY CENTRE, 7, Cross, S.S. Layout, B
9448104044













Logo of Bapuji Institute of Engineering and Technology

BAPUJI INSTITUTE OF ENGINEERING AND TECHNOLOGY,
DAVANGERE - 577004

TECHNICAL SEMINAR
28CSE27

**IMPLEMENTATION OF 'INTERNET OF THINGS' (IoT) IN
CONSTRUCTION INDUSTRY**

PRESENTED BY - T.N. ARAVIND
USN - 48D20CSE21

GUIDED BY - Ms. SUPRIYA XAVIER LOPES
ASSISTANT PROFESSOR

1



FC
COM
IN

Associat

562819, FPACE COMMUNITY C

Bapuji Institute of Engineering and Technology
Bapuji Group of Institutions, Davangere
Approved by NAAC, AICTE, UGC
Recognized by UGC under 2(F) and 12(B)

TECHNICAL SEMINAR ON
"INVESTIGATION ON WALL PANEL SANDWICHED CONCRETE"

PRESENTED BY
VIDHYASHREE N (4BD20CSE22)

Under the guidance of
Mr. Sathish G N
Assistant Professor
Department of Civil Engineering
BIET, Davangere





Literature Survey

TITLE	AUTHORS	YEAR OF PUBLICATION	OUTCOMES
Development of Tuned Mass Damper with mass control system for seismic response of existing high-rise building	Aravind Kumar, Harshad Kumar and Aravind Kumar	2016	<ul style="list-style-type: none">A novel developed large tuned mass dampers for high-rise buildings adaptable to resist earthquakes and wind load.The TMD can flexibly applied to any building regardless of its height or size without affecting habitable room space.They suggested that it will contribute greatly to the seismic upgrading of existing high-rise buildings.
Effective Method Tuned Mass Damper	Lazaropoulos and Nikolayevich	2007	<ul style="list-style-type: none">The developed framework is easy to apply to any given general linear TMD system with a known motion.TMDs of certain types, including TLCDs, have been shown to operate with significant added mass, leading to a smaller equivalent simple TMD mass than might be expected.

